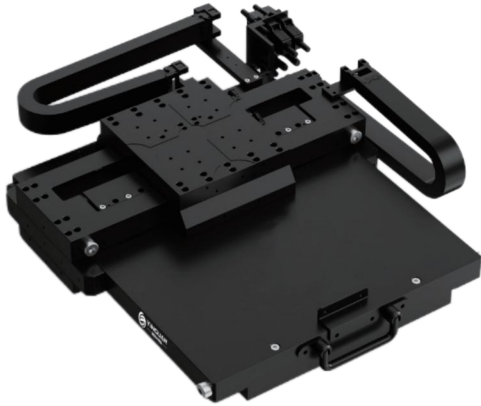


Air-bearing XY stage



Features

- Non-contact direct-drive linear motor drive for high dynamic response
- Optical linear encoder for high precision
- High-precision air bearing guidance
- Excellent positioning accuracy and dynamic performance

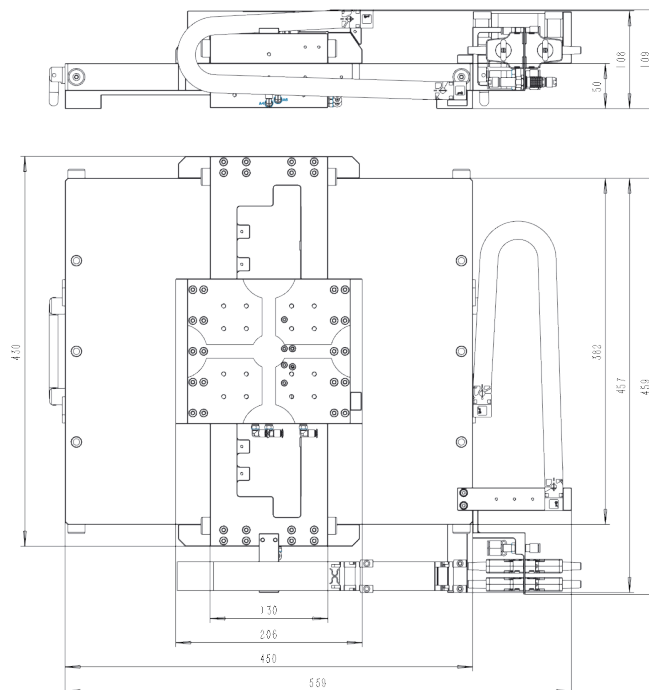
Description

Air-bearing XY stage with ultra-thin profile dimensions for high-accuracy, high-stiffness horizontal linear motion.

Applications

- Semiconductor
- Automation
- Biomedicine

Interface Definition



Technical Specifications

AXY110	
Active axes	X, Y
Travel range	160 mm (upper axis) ; 180 mm (lower axis)
Max. velocity	upper axis: 0.7 m/s lower axis: 0.8 m/s
Max. acceleration	upper axis: 0.7 g lower axis: 2 g
Sensor resolution	5 nm
Bidirectional repeatability	$\pm 0.1 \mu\text{m}$ (upper axis) ; $\pm 0.1 \mu\text{m}$ (lower axis)
Accuracy_calibration value	$\pm 0.2 \mu\text{m}$ (upper axis) ; $\pm 0.2 \mu\text{m}$ (lower axis)
Straightness	$\pm 0.5 \mu\text{m}$ (upper axis) ; $\pm 0.5 \mu\text{m}$ (lower axis)
Flatness	$\pm 0.5 \mu\text{m}$ (upper axis) ; $\pm 0.5 \mu\text{m}$ (lower axis)
Pitch	25 μrad (upper axis) ; 25 μrad (lower axis)
Yaw	10 μrad (upper axis) ; 10 μrad (lower axis)
Max. load	4.5 Kg
Peak force	85 N
Continuous force	39 N
Moving mass	upper axis: 2.8 Kg lower axis: 10Kg
Total mass	28.5 Kg
Dimensions	559 mm X 459 mm X 109 mm